


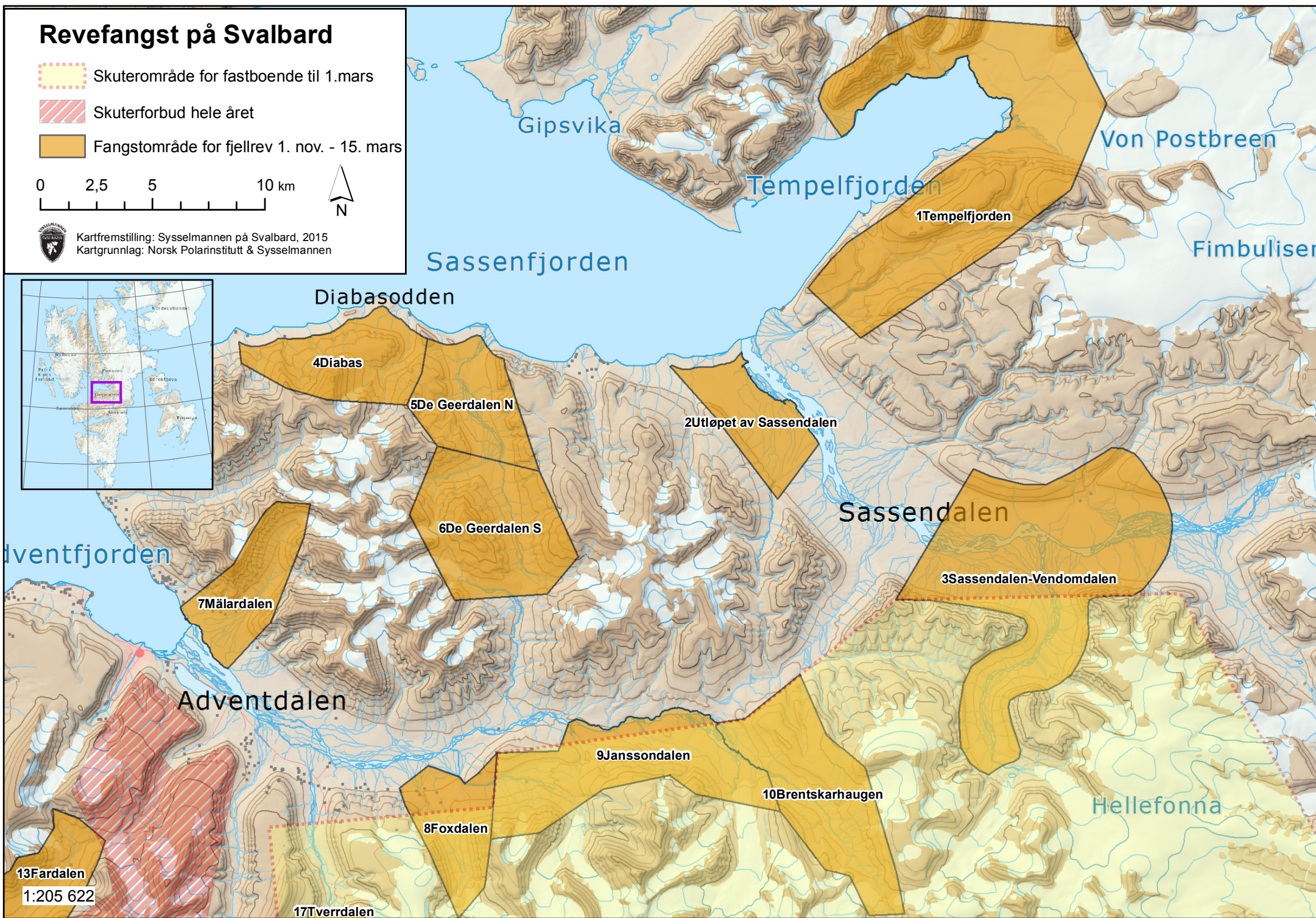


Revefangst på Svalbard

-  Skuterområde for fastboende til 1.mars
-  Skuterforbud hele året
-  Fangstområde for fjellrev 1. nov. - 15. mars



Kartfremstilling: Sysselemannen på Svalbard, 2015
Kartgrunnlag: Norsk Polarinstitutt & Sysselemannen



13Fardalen

1:205 622

17Tverrdalen